



# GMT MONTHLY MEMBERSHIP PROGRESS REPORT

Results as of: 5/31/2026

Multiple District 322

LOCATION: INDIA

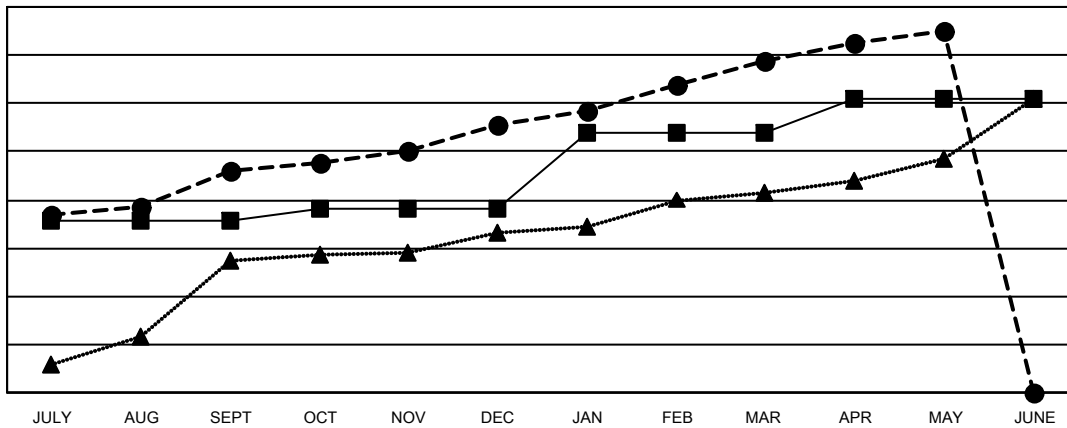
GMT: OPEN

GMT CA 6 - I

Clubs			
RESULTS FOR 2025-2026			
QUARTER	NEW CLUB GOAL	NEW CLUBS	DROPPED CLUBS
JULY/AUG/SEPT	71	92	22
OCT/NOV/DEC	5	19	69
JAN/FEB/MAR	32	27	21
APR/MAY/JUNE	14	12	2

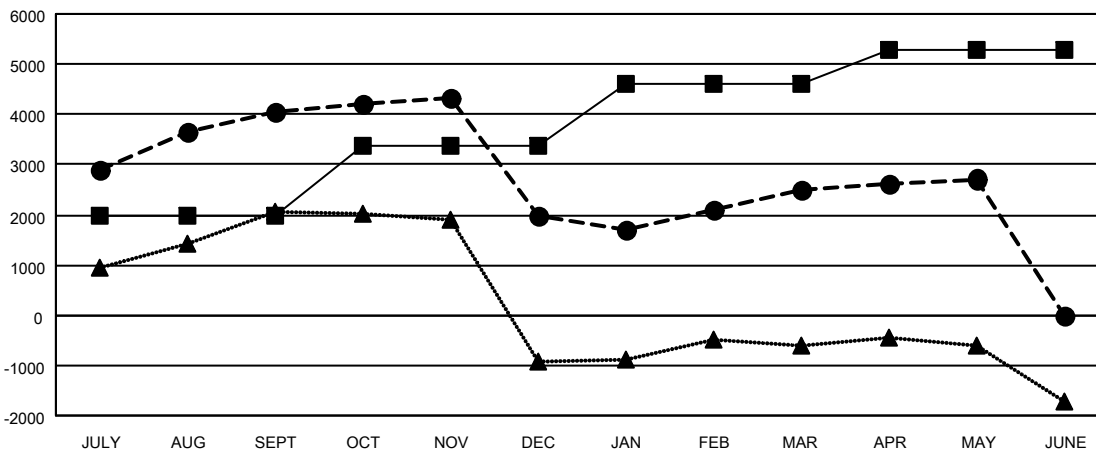
Members			
RESULTS FOR 2025-2026			
QUARTER	MEMBER GROWTH NET GOAL	MEMBER GROWTH ACTUAL	DROPPED MEMBERS ACTUAL (including transfers)
JULY/AUG/SEPT	1,990	5,144	818
OCT/NOV/DEC	1,370	2,401	4,255
JAN/FEB/MAR	1,255	1,814	854
APR/MAY/JUNE	675	1,607	1,133

GOALS AND ACTUAL NEW CLUBS CUMULATIVE



- - CURRENT YEAR GOALS FOR NEW CLUBS
- - CURRENT YEAR ACTUAL NEW CLUBS
- ▲ - LAST YEAR ACTUAL NEW CLUBS

GOALS AND ACTUAL MEMBERS CUMULATIVE



- - MEMBER GROWTH NET GOAL
- - MEMBER GROWTH ACTUAL
- ▲ - LAST YEAR MEMBERSHIP ACTUAL

DROPPED CLUBS: 114	914 CLUBS OF 1258 ADDED 1 OR MORE NEW MEMBERS	<b>GENDER DISTRIBUTION</b>
		MALE 28,819 (67.73%)
		FEMALE 13,732 (32.27%)
<b>DROPPED MEMBERS</b>	<a href="#">CLICK HERE FOR CUMULATIVE MEMBERSHIP DATA</a>	TOTAL FAMILY UNIT MEMBERS 18,044
DECEASED 141		FAMILY MEMBERS PAYING HALF DUES 10,670
CLUB CANCELLED 2,800		
OTHER 4,102		
<b>TOTAL 7,043</b>		